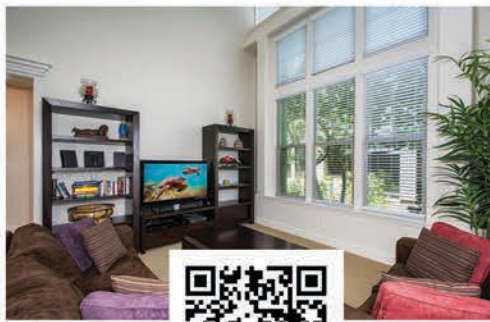


Luxury Lifestyles in Hawaii

Luxury Resort at Mauna Lani

Kulalani Resort #2001 – Live Your Dreams Today in Hawaii!

Kulalani Resort Villa 2001 is centrally located within Kulalani, and is very close to the Kulalani recreation center. Nicely furnished and appointed, this popular floor plan includes a large lanai with an outdoor kitchen off of the great room, with its 20 foot high vaulted ceilings. The kitchen boasts under counter lighting, plantation-style cabinets, pull-out pantry shelves, and a convection oven. There is a bedroom and bath downstairs, and the upstairs consists of a large master suite with a jetted tub, walk-in shower, and a very private lanai. The recreation center at Kulalani is outstanding, and includes 2 pools (including a lap pool), owner's pavilion, an air conditioned gym, men's and women's locker rooms—all in a peaceful and tranquil setting. The owner's pavilion includes a kitchen for family gatherings and special events. Mauna Lani owners are also eligible to apply for membership in the Mauna Lani advantage program. Included in the membership are various discounts within the resort, including reduced green fees at the two outstanding golf courses within the development. Owners also enjoy access to the stunning Mauna Lani Beach Club, with its beautiful sandy beach and the delicious Napua restaurant. Very nearby are the Shops at the Mauna Lani, which features a grocery store, great dining, and boutique shops. The very reasonable HOA fees include water, sewer, trash, basic cable, pest control, recreation center fees, the Mauna Lani Master Association fee, and insurance on the structure. This condominium offers a very private and hassle free lifestyle on the world famous Kohala Coast of the Big Island of Hawaii. Come live your dreams today! 2 Bed | 2 Bath | \$599,000 **REDUCED**



Hawaii
Luxury Listings, LLC
Real Estate | Investment | Luxury Lifestyles

Johnny Mac McElree, PB
Direct (808) 443-6288
HawaiiLuxuryListings.com
Johnny@HawaiiLuxuryListings.com
Kohala Coast, Big Island, Hawaii

